

Chenango County

Greater Opportunities

44 West Main Street, Norwich, NY 13815

607-334-7114

www.greaterops.org



12.9%
Chenango
County
Poverty Rate

County Population:
47,527

Population for whom poverty
status is determined:

Overall
46,629

Population Under 18
9,477

Population 25 & Over
33,672

Population 65 & Over
9,492

Living In Poverty

Individuals
12.9% (6,021)

Children (Under 18)
15.8% (1,499)

Adults 25 & Over
12.0% (4,026)

Adults 65 & Over
8.4% (800)

Education & Poverty

Education Attainment for Adults 25+ (33,672)



Total Population

No Degree	11.5%
High School	39.9%
Associate	29.4%
Bachelors +	19.2%

Living in Poverty

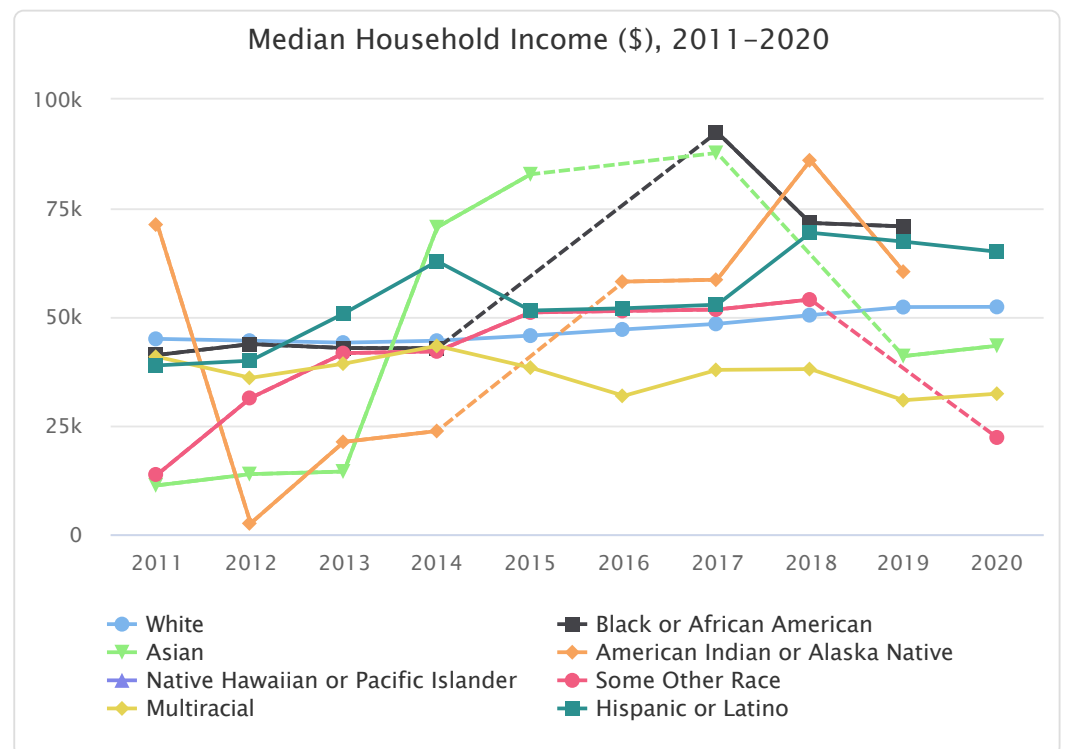
No Degree	28.0%
High School	13.2%
Associate	9.2%
Bachelors +	4.0%

Employment & Poverty

Living Wage for 1 Adult, 1 Child	\$30.00
Hourly Wage for FMR, 2BR Apt	\$15.21
Median Income	\$37,365
Median Income w/ HS Diploma	\$31,049
Male Median Earnings	\$38,341
Female Median Earnings	\$23,204



Median Household Income by Race & Ethnicity



ALICE: households that are
**Asset Limited, Income
 Constrained, Employed.**

26.2%
**Households
 Live Below
 ALICE Threshold**

Total Households:
20,616

ALICE Households
 by Race & Ethnicity

White
5,591

Black or African
 American
30

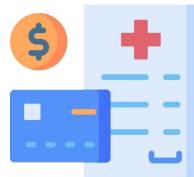
Asian
No data

Native Hawaiian or
 Pacific Islander
No data

Multiracial
120

Hispanic or Latino
123

Health Insurance & Poverty



No Health Insurance

Employed	4.9%
Unemployed	9.7%

Gender & Poverty

Male	12.0% (2,805)
Female	13.9% (3,216)

Of those families with
 Female Heads of Household
 and Children Present

33.6%

Live in Poverty

Race, Ethnicity & Poverty

White	12.4% (5,527)
Black or African American	32.3% (113)
Asian	13.1% (25)
American Indian or Alaska Native	46.9% (52)
Native Hawaiian or Pacific Islander	29.4% (5)
Some Other Race	6.6% (18)
Multiracial	26.9% (281)
Hispanic or Latino	15.0% (160)

ALICE Household Monthly Survival Budget

1 Adult	\$1,906	2 Adults	\$2,818
1 Senior Adult	\$2,191	2 Adults, 2 Children	\$4,514
1 Adult, 1 Child	\$2,848	2 Adults, 2 Childcare	\$5,574
1 Adult, 1 Childcare	\$3,386		

Children in Poverty

